

HARBOR AREA MODEL 'A' CLUB

Dedicated to preserving and driving the 1928-1931 Model 'A' Ford since 1957
Torrance, California

MAY 2024

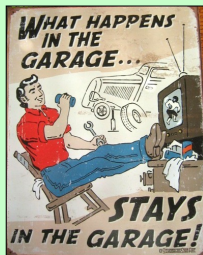
2016-2022 MARC
Award of Continuing Excellence
for Harbor Light newsletter.
2020 MAFCA
Newsletter of Merit



Harbor Club on mystery tour to miniature railroad collection in Torrance CA
Owner is Ron Parnell in red shirt

Technical Activities

Saturday mornings.
We meet from about 9:30AM to noon to work on Model A projects. Bring your Model A by and we'll work on it.
Al's Garage,
907 Van Ness, Torrance CA
(in the alley)



Next Club Meetings:

The April meeting will be our regular date
Friday, April 25th @7:30 PM

The May meeting will be
Friday, May 31st

Next Board Meeting

The next Board meeting will be Saturday,
May 11th at
Al's garage, 9:30AM



- 2 Dennis' Words — 'Second Gear Grind'
- 2 Editor's Corner — Great tours
- 3 Railroad tour pictures
- 4 Club merchandise - Items for sale
- 4 Pancake breakfast article
- 5 Miniature railroad tour article
- 5 MAFFI Minute
- 6 Upcoming events calendar

- 7 Technical info—Rear Axle nuts
- 8 A little Ford history—mid 20's
- 9 Birthday and anniversary dates
- 10 Era fashions—1930's
- 11 Our advertising friends
- 12 Officer List & Mailing Info



inside

HARBOR LIGHT



A Note from
Harbor President
Dennis Simpson



The Second Gear Grind

Well one of my favorite events, the Orange County MAFC Annual Pancake Breakfast, has come and gone. The weatherman assured me all week it was going to rain in Orange on Sunday, so on Saturday I decided to stay home. Other hardy members drove their moderns. Our very own editor, Dick Wyckoff, drove the lone Model A from the Harbor A's. I'm told they braved the cold, but it never rained and they had a fantastic time. Looking forward to next year.

The next Saturday, April 20th, made up for missing the Pancakes. We had a great time on Betty's Mystery Tour visiting Ron's Western Layout, a private scale train collection and a delicious lunch at Richmond Bar & Grill in El Segundo. A BIG thank you to Donniss and the Activities Committee for all of their planning and execution that goes into these events for our enjoyment.

I can hardly wait until the next adventure the "Sensational Six" have dreamed up. Till next time, remember, don't worry about things you have no control over.

Dennis



Editor's Corner
By Dick Wyckoff

April has been a busy month when it comes to club activities. First we had our annual safety inspection/meeting. Then the following week the club went to the Orange County annual Pancake Breakfast in Orange, CA (45 mile drive each way). The weather wasn't too nice, but a couple of us drove our As anyway. As it turns out, it did not rain.

Then the following week we had a mystery tour to Torrance to a awesome collection of miniature figures (the smallest scale I have ever seen) on a miniature railroad layout. The display was in a 600 sq/ft warehouse room. Thousands of miniature people, autos, animals, trains all displayed doing active things. Things like building something, climbing a mountain, working in a lumber mill, camping, building a structure. All the above while miniature trains circled around the displayed activities. The people were probably half an inch tall, the model A pickup truck was an inch long.

The club members were overwhelmed by the detail (I was). I think I heard that member Jim Huizdos made the arrangements for this tour. Thanks, Jim.

Of course, no event can go on without food! The parade of 6 cars ended up in El Segundo at the Richmond Bar and Grill where we had the best burgers and salads around. What a fun event this was.

Thanks to the committee that made all the arrangements. We had a great time!



Pictures from the Mystery tour
(Article on page 5)



[Saturday Morning Coffee Gathering is Alive and Well!](#)

If you are looking for a little tire-kicking adventure on **Saturday** mornings between 7 and 9AM, check out the Caffeine Cruisers at the corner of Artesia Blvd. and Hawthorne, in Torrance, CA. Several of the Harbor Model A club members and other car enthusiasts of all car types meet to talk cars. There are some very nice autos and some nice people there, too!

The address is 17400 Hawthorne Blvd., Torrance CA. (at Artesia Blvd.)

Come on by and get your weekend started in true So. California style.



[2024 Membership, Roster and Club Merchandise Items](#)

Jim Huizdos has a selection of new **Club merchandise**. We have hats, shirts, patches, t-shirts and we still have 60th anniversary items for sale at a discount. More to come. The updated **2024 Harbor phonebooks/rosters** are available from Ursi free of charge through e-mail. Club members that don't attend events can request a phonebook/roster by mail. Contact **Ursi Schmidt** at 310-561-4895. Make sure Ursi has your latest info. **Just a note:** We regularly update the roster. If you have any address changes, phone number changes or email changes, let Ursi know. Let Dick Wyckoff know, too. He'll put the info in the *Harbor Light*.

[April Showers on the Orange County Pancake Breakfast?](#)

That was the question. After checking the weather forecast all week long and most folks opting to drive their moderns, a group of more than 20 Harbor Area members and guests enjoyed unlimited tasty pancakes, sausage, and scrambled eggs at the 61st Annual Orange County Model A Ford Club Pancake Breakfast.

The threat of rain hung over the event in the week leading up to the big day, so the number of Model A's was far fewer than normal, but Dick Wyckoff, Bea and Mickey Fruchter, and Richard Parrish were the brave souls who drove their A's despite the potential for rain.

Once we were at the park, the weather was cool but pleasant and, most importantly, dry. The organizers were still keeping an eye on the weather throughout the event, and moved up the Opportunity Drawing so we were all able depart before the anticipated rain. Our winners included Tim Harrison, Robert Ikeda, Richard Parrish, Jim Runyon, Steve Thompson, Mike Wright, and Gloria Younkin. As usual, a good time was had by all, and, by all reports, everyone got home without incident - weather- or otherwise.



Betty's* Mystery Tour

By Weeg Thompson

On Saturday, April 20, eight Model A's and twelve members and a guest participated in what was a highly successful Mystery Tour. Participants met at Harbor Freight where they got the driving directions to the first stop of the tour. Although we drove less than five miles, when we arrived at our destination we were transported into an entirely different world. Thanks to Jim Huizdos's connection, we got to visit Ron Varnell's All Era Western Railroad (AEWRR). Ron's extensive layout includes many different areas with a wide variety of settings (for example, city, cattle yard, coal mine, logging, redwoods, Union Station). The level of detail in each area is simply amazing and difficult to describe in a manner that does it justice. One favorite vignette that got lots of attention was the area where several people were out of their cars parked near the tracks "mooning" the passing trains, which apparently was a favorite pastime in some areas at one time. Ron and several model railroad enthusiasts ran trains and provided explanations of many aspects of the layout and trains. The layout is HO scale or 1/87 actual size (one modeled inch to 87 actual inches). Many superlatives were used by participants to describe the experience, including one person who thought this was the best tour ever. There was so much to see!



While many of us could have stayed much longer, there was more to do on our Mystery Tour. Following our next set of driving instructions, this part of the tour consisted of an opportunity to drive our cars up onto and across the Palos Verdes Peninsula and along the coast through Torrance and Redondo Beach, and then along Pacific Coast Highway through Manhattan Beach to El Segundo. Once in El Segundo, we headed back toward the beach on Grand, turning on Richmond St. to arrive at our lunch stop and final destination - Richmond Bar and Grill. We were joined at lunch by four more members (though we had had one member drop out during the driving portion). We had a lovely outdoor dining experience on their patio area. The fare ranged from salads to burgers and hot dogs to sandwiches, and people in our group ordered a little of everything, including many of us enjoying their famous chips. Only one person was brave enough to try the local special of a Peanut Butter Bacon Cheddar Burger, but he was not as impressed with it as the reviewers on Yelp.

Following lunch, we all headed our own way, having had a great day and having thoroughly enjoyed our Mystery Tour.

* For many, who Betty is remains a mystery in its own right. You'll have to ask the President if you want to solve that one!

MAFFI Minute

Now you can shop from the comfort of your home for wearing apparel and home décor specific to YOUR Model A and help the museum out in the process!

MAFFI has paired with a company that provides a variety of Model A products that can be customized! to your Model A/year. Or if you prefer, the merchandise can have the MAFFI logo on it. You can buy t-shirts, polo shirts, sweatshirts, hoodies, aprons, and hats to wear. Or, if your home or shop need some Model A décor you can buy wall art or a clock and more . . .

The company that we partnered with takes the orders on-line with credit cards and ships your custom order to your home. MAFFI gets 10% of the proceeds from each sale, so you are helping the museum every time you shop and getting great products.

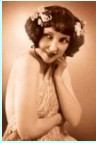

It's easy: go to the MAFFI.org website, click on Store and you will be rerouted to the ModelAshirt store. **It is important to shop by going through the MAFFI website though.** It's the only way our partner knows to give us 10% of the sale. If you go directly to the ModelAshirt website, staff don't know you are a MAFFI customer and you pay the same price, but the museum doesn't get anything.

We know not everyone can get to Hickory Corners, MI to buy Model A merchandise; now you can shop Model A items 24/7 year around! And with Mother's and Father's Day around the corner, we've just made shopping a bit easier for the Model A enthusiasts in your life.

The accompanying pictures are some of my purchases; I guess you know what I drive for a Model A!

Cindy Ellenbecker, Trustee/Secretary for MAFFI

May's Calendar of Events

<u>SUNDAY</u>	<u>MONDAY</u>	<u>TUESDAY</u>	<u>WEDNESDAY</u>	<u>THURSDAY</u>	<u>FRIDAY</u>	<u>SATURDAY</u>
MAY 2024 HARBOR A HAPPENINGS			1	2	3	4 <u>MODEL A TECHNICAL SUPPORT</u> Al's Garage 9:30am-12pm
5 	6 <u>DINNER</u> 4:30 *Location TBD	7	8 <u>ACTIVITY COMMITTEE MEETING</u> 11am 	9	10	11 <u>BOARD MEETING</u> 9:30am Al's Garage  <u>MODEL A TECHNICAL SUPPORT</u> Al's Garage 9:30am-12pm
12 <u>JANET KLEIN OLD TOWN MUSIC HALL EL SEGUNDO</u>  HAPPY MOTHER'S DAY	13 <u>DINNER</u> 4:30 *Location TBD	14	15	16	17	18 <u>MODEL A TECHNICAL SUPPORT</u> Al's Garage 9:30am-12pm
19	20 <u>DINNER</u> 4:30 *Location TBD	21	22	23	24	25 <u>MODEL A TECHNICAL SUPPORT</u> Al's Garage 9:30am-12pm
26	27 <u>DINNER</u> 4:30 *Location TBD MEMORIAL DAY-- observed	28	29	30	31 <u>MODEL A CLUB MEETING-- Club House 7:30 PM</u> <u>WHITE ELEPHANT SALE</u> 	*Contact Jim Huizdos or Gloria Younkin for dinner location.

UPCOMING EVENTS

MAY

Sunday, May 12th – Janet Klein and her Parlor Boys
Location: 140 Richmond Street, El Segundo, CA 90245
Time: Show begins at 2:30pm
Cost: \$25.00 per person
Meeting Time & Location: Harbor Freight, 310 Artesia Blvd, Torrance, 90504 - 1:15pm leave at 1:30pm

May is Model A Youth Month – Stay tuned we are working on an event to educate & bring youth into the Model A world.

Friday, May 31st, BUSINESS MEETING

Location: WALTERIA CLUB HOUSE, 3855 W. 242nd STREET, TORRANCE, 90505
Time: 7:30PM
We will be having A WHITE ELEPHANT SALE, bring your treasures to sale for a fundraiser to benefit our club and help fund our activities.

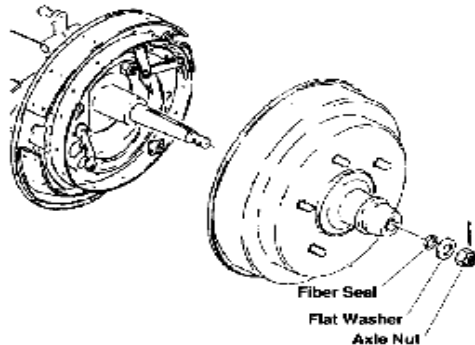
COME BACK NEXT MONTH – LOOK HERE FOR MORE FUN EVENTS AHEAD – LETS GET OUR MODEL A'S ON THE ROAD AGAIN!!!!!!

Technical Tips

Jim's Tech Tips

"Check Your Rear Axle Nuts"

Every time I have a rear wheel off of a Model A, I use the opportunity to check the tightness of the rear axle nut for that wheel. They are supposed to be quite tight, and yet I find many with at least one axle nut that is loose. This is not good. If the hub is able to move on the axle, it will cause excess wear to the end of the axle and can damage it to the point where the axle will need to be replaced.



To check it, first remove the cotter key. With the transmission in 1st or Reverse gear, and the opposite rear tire on the ground, you can apply a wrench to the axle nut and confirm it is tight.

Ford did not publish torque values for nuts and bolts; he counted on the experience and "feel" of expert mechanics to know how tight to make things. Les Andrews has a value of 125 ft-lbs. in his book for this nut, and I feel that is a good target to shoot for. Watch the position of the cotter pin hole relative to the slots in the axle nut. If the pin will not line up on the nut, keep tightening the nut until the cotter pin goes in. Bend the ears over. I use a new cotter pin every time.

This simple maintenance step will help you avoid bigger problems down the road.

Until next time, *Have a Model A Day!*
Jim

Interesting find

At a recent Saturday morning mechanic gathering, member Gary mentioned a strange noise coming from the engine compartment of his coupe. Upon further inspection, we located the problem.

The metal harness shield for the headlight wiring had not been secured properly and had found it's way out to touching the radiator fan.

We secured the harness out of the way and all is well. This could have been a lot worse but we found it in time. You might check your own cars. . . .



A Little Ford History

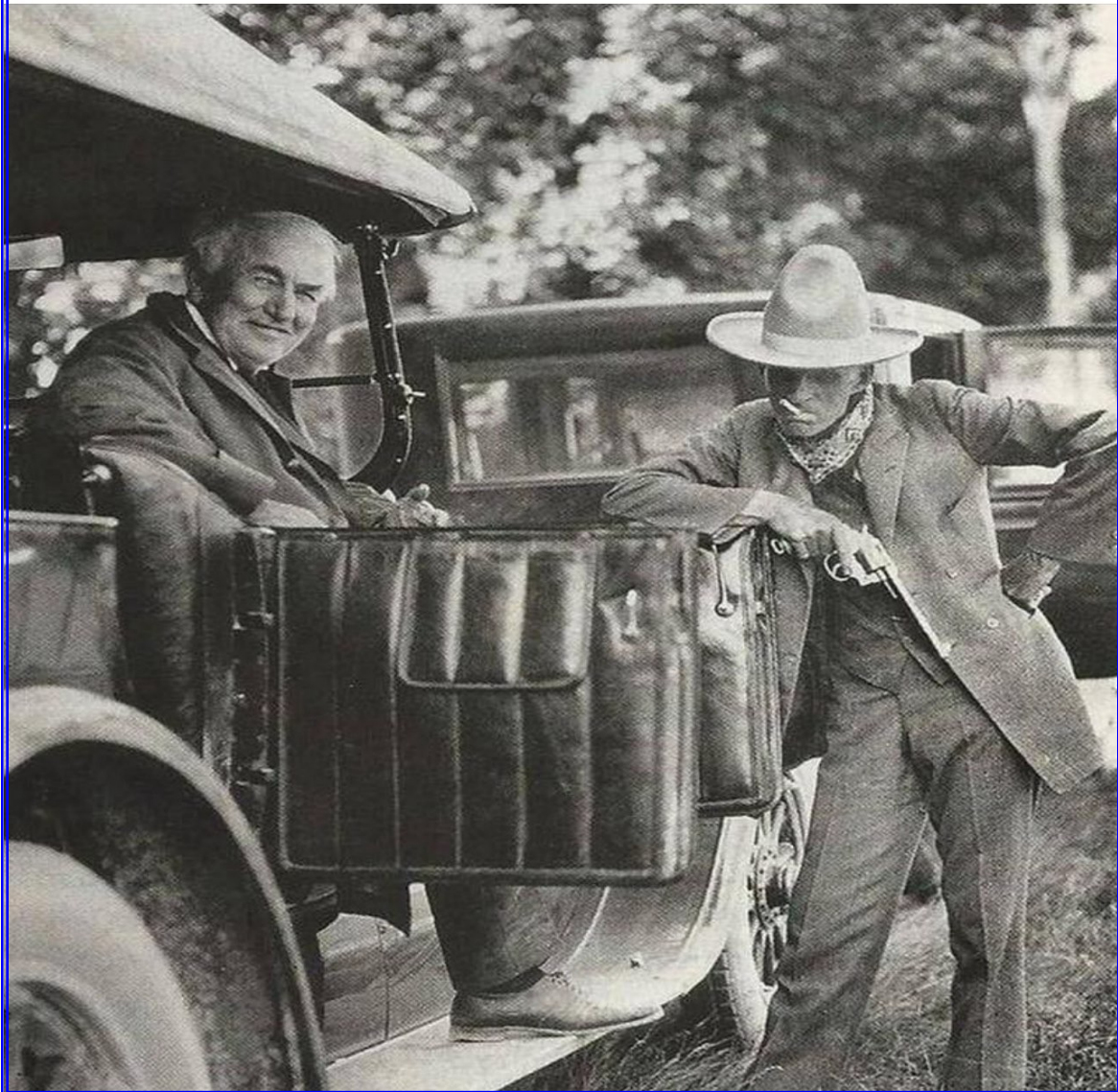


History Shortcut · Following



1d · 🌐

In 1923, a photograph captured Henry Ford and Thomas Edison, Ford in cowboy attire, and Edison seated in a car. These iconic American inventors shared a close friendship that spanned their professional lives. Ford's initial connection with Edison stemmed from his role as chief engineer at the Edison Lighting Company. During his spare hours outside work commitments, Ford dedicated himself to constructing his inaugural automobile. This passion project eventually burgeoned into his own automotive enterprise, later becoming one of the foremost successful car manufacturers in the United States.



May Birthdays

May

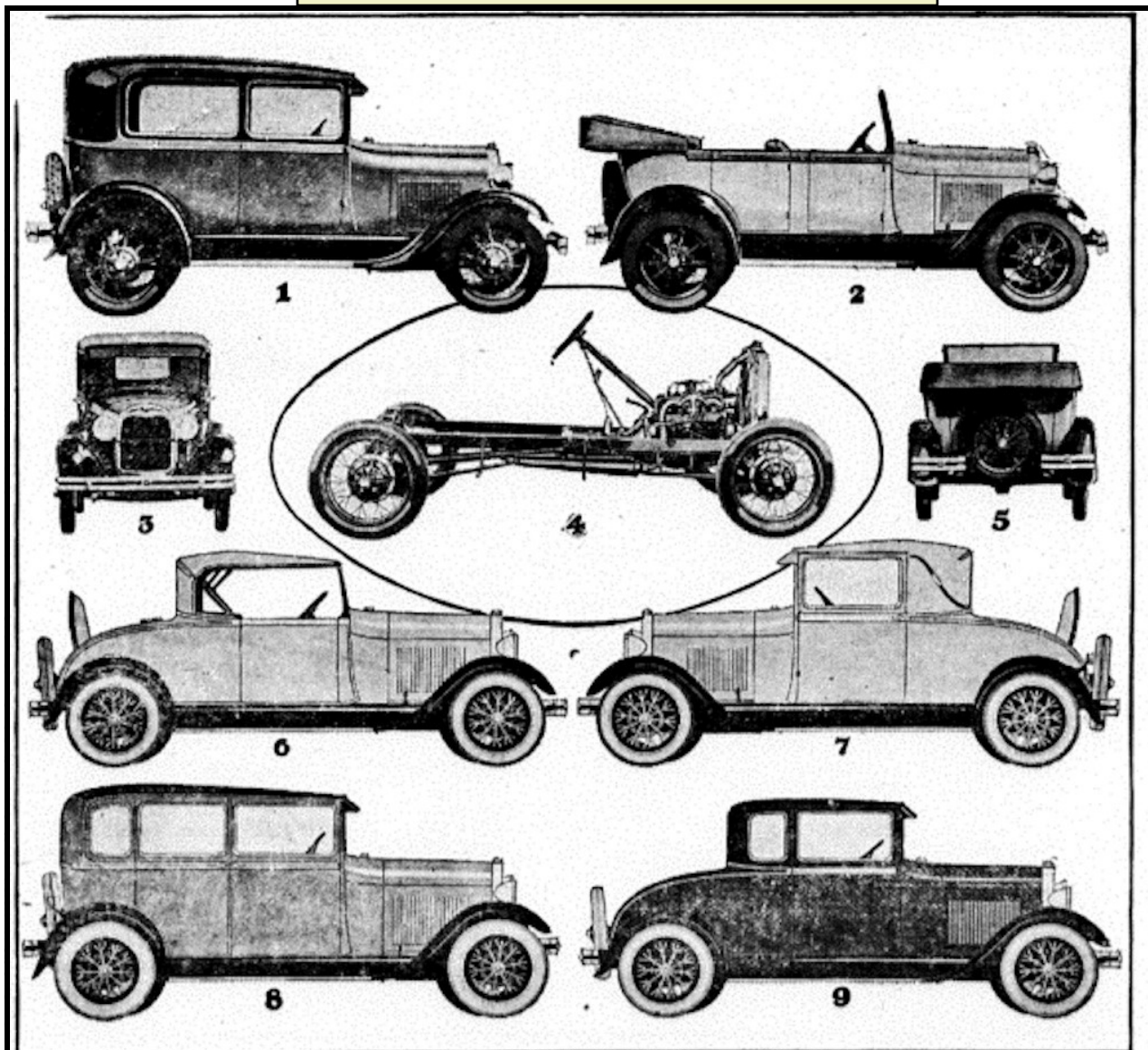
4 Leonard Funk
9 Steve Adams
10 Jim Speights
15 Peggy Wishon
19 Pat Tucker

May Anniversaries

May

4 Wayne & Tomo Sterling
5 Dr. Stan Klein & Joan Wright MD
20 Leonard & Darlene Funk

New Model A era ad



FIRST AUTHENTIC PHOTOGRAPHS OF THE NEW FORD CAR

The six body models and chassis of the new Ford car are shown above. The new car has graceful, distinctive lines, exceptional power, unusual speed and getaway. It has been driven at more than sixty miles per hour; accelerates from 5 to 25 miles per hour in $8\frac{1}{2}$ seconds in high gear; travels 40 miles per hour in second gear; is fitted with three-speed transmission of Lincoln

design and is completely equipped. Each model is offered in a number of bright optional color combinations. No. 1 is the new Tudor; 2 the new Phaeton; 3, front view of the new Tudor; 4, the new Chassis; 5, rear view of the Phaeton; 6, the new Sport Roadster; 7, the new Sport Coupe; 8, the new Fordor Sedan and 9, the new Coupe.

Era Woman's clothing 1930's

Color-clothes refer to these "Color-keepers" bring the old color away

\$1.00

Practical Style
NEW REVISED DESIGN

BRAND NEW!
COAT STYLE

The Quality Washable Material

Practical HOVERETTE

\$1.39

79c

89c

The *Harbor Light* is a monthly publication for the Harbor Area MARC/MAFCA. All articles or want ads must be received by the 15th of each month in order to appear in the following month's publication. Neither the *Harbor Light* and its staff, nor the Harbor Region of the Model A Restorer's Club Inc. and Model A Ford Club of America, Inc. will assume any liability for errors or omissions, or for any liability or resultant damages for products, opinions or services listed herein. Some information contained in our newsletter has been reprinted from other newsletters; we thank and acknowledge them. Editor



Harbor Area Model A Club

 Torrance, California



Torrance, CA
JOEY'S SMOKIN' BBQ
 www.getmesomebbq.com

25308 Crenshaw Blvd.
 Torrance, CA 90505
 Email: joeyssmokinbbq@outlook.com
 1-310-257-1324

Proud printer of the 'Harbor Light'
STUDIO PRINTING

Edward Su
 ed@studioprinting.net
 www.studioprinting.net
 1750 E. Holly Avenue
 El Segundo, CA 90245
 PHONE: 310-333-8989
 FAX: 310-333-8986
 CELL: 310-292-3219

EARLY FORD STORE
 of California
 www.earlyfordstore.com

Specializing in Rare Parts and Accessories for Early Fords 1928/1972 Passenger Car & Pick-Up
Bill McGrath
 San Dimas, CA 91773
 108 W. Bonita Ave.
 Tel: (909) 305-1955
 Fax: (909) 305-1953



Mike's "A" Ford-able Parts
Mike Butcher
 124 Model A Drive, Maysville, GA 30558
 email: mike@mikes-afordable.com - www.mikes-afordable.com
 Fax: 706 652 2492 - Phone: 706 652 3866
 1 888 TRY MIKE (879 6453)
 Specialising in 1928 - 1931 Model A Ford Parts

M B RENTALS
 Studio Equipment
 Lights and Fixtures

Drain Marshall
 Home: (310) 378-5061
 Cell: (310) 570-5938

BRATTONS ANTIQUE AUTO PARTS

 1606 BACK ACRE CIRCLE
 MOUNT AIRY, MD 21771
 Order # 800 255-1929
 Web: brattons.com
 FREE 194 page illustrated MODEL A parts catalog
 Catalog contains 3,200 Model A parts with full descriptions and Picture of each part.
 Supplying Quality by using over 90% U.S. parts
 Serving the Model A restorer with parts since 1977

TORRANCE TRANSMISSION
 HONESTY EST. 1976 INTEGRITY
 ERIC BAILEY 24009 HAWTHORNE BLVD.
 310-378-9217 TORRANCE, CA. 90505
 TORRANCE TRANSMISSION SERVICE.COM torrancetrans@gmail.com

ARIZONA MODEL A, L.L.C.
 • NEW PARTS
 • USED PARTS
 • SERVICE
 • RESTORATION
 • HOURS: TUES-FRI 9-12, 1-5
 SAT & EVES BY APPOINTMENT

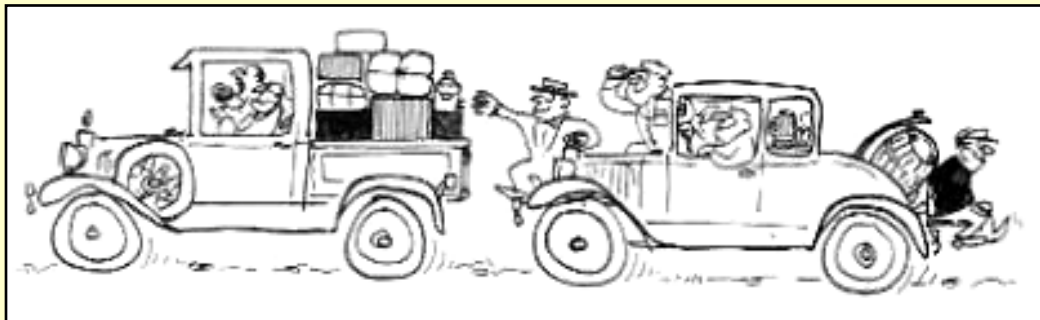
 SAMUEL P. GUTHRIE
 15838 S. GILBERT RD., CHANDLER, AZ 85225
 (480) 782-0266

Bringing midwest values and integrity to Southern California for over 30 years

Midwest Roofing Co., Inc.
BILL YOUNKIN
 1305 W. 132nd Street
 Gardena, CA 90247
 Cell (310) 766-6922

Our Advertising Friends

<p>CW Moss Ford Parts 420 W. Chapman Ave. Orange, CA 92866 1-800-322-1932</p>	<p>Aquarium of the Pacific 100 Aquarium Way Long Beach, CA 90802 1-562-590-3100</p>	<p>Snyder's Antique Auto 12925 Woodworth Rd. New Springfield, OH 44443 1-888-262-5712</p>
---	---	---





For MARC info and membership, see www.ModelARestorers.org



For MAFA info and membership, see www.MAFCA.com

The Harbor Area A's meet monthly on the last Friday of every month at the Waleria Park Clubhouse, located at 3855 W. 1242nd St. in Torrance, California. Meetings begin at 7:30 PM (The park is located about 1-1/2 blocks west of Hawthorne Blvd. and one block south of Pacific Coast Hwy.) We'd like to invite all interested parties, even if they don't own a Model A Ford, to come and join us. Our goal is to educate the public about Model A Fords and have fun while doing it.

2024 Board of Directors:

President:

Dennis Simpson (310) 343-8227
Email: OldFordor@gmail.com

Vice-President:

Tim Harrison (310) 920-3319

Treasurer:

Daffy Wagner (310) 374-6113

Secretary:

Gloria Younkin (310) 316-8722

Activities Committee:

OPEN

Technical Director/Safety:

Cliff LeFall (323) 715-3153

Appointed Officers:

Membership:

Ursula Schmidt (310) 561-4895

Historian:

Janet Winter (310) 251-6673

Sunshine Secretary:

Theresa LeFall (323) 715-3153

Advertising:

Jim Huizdos (310) 375-2737

Refreshments Coordinator:

Weeg Thompson (310) 346-6409

Regional Correspondent:

Sue Hankins (310) 357-5233

Web: HarborAreaModelAClub.com

Appointed Officers:

Tool Custodian:

Bob De Crescenzo (310) 540-3690

Merchandise:

Jim Huizdos (310) 375-2737

M/Sergeant-at-Arms:

Jack Gordinier (424) 263-2397

Webmaster:

Steve Thompson (310) 346-6143

Harbor Light editor:

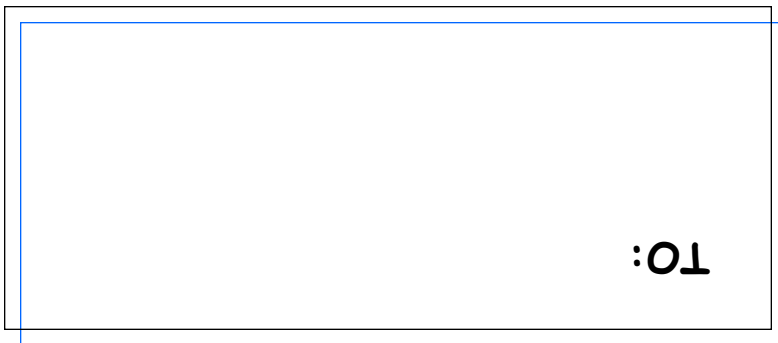
Dick Wyckoff

Phone: (310) 322-8863 (h)

(310) 779-5772 (c)

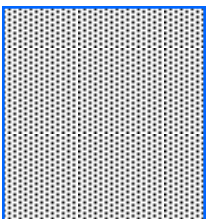
E-mail: JannDick@earthlink.net

1931 Era Poster



MAY 2024

From:
Harbor Area Model A Club
Dick Wyckoff, Editor
337 Lomita St.
El Segundo CA 90245



The Harbor Light

